

HOLIDAY CODE: PA0604 - for bookings call 01302 5732244

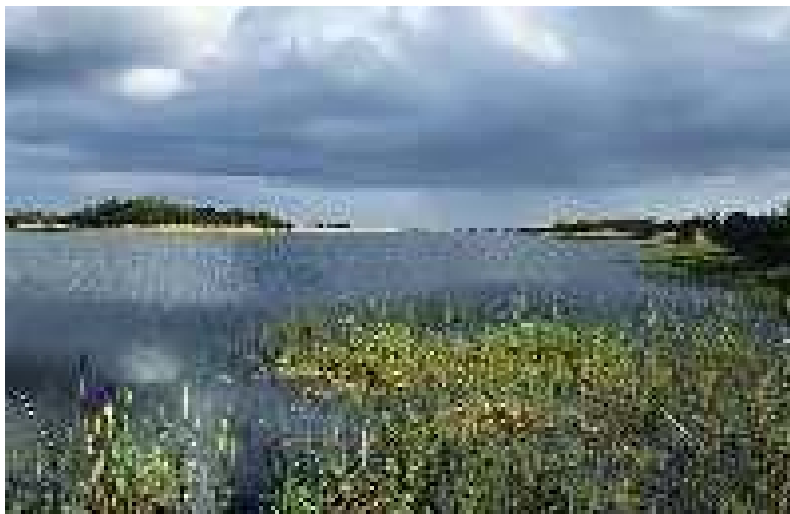
Estonian native horses at coastal meadows of Saaremaa II

4th - 12th September 2006

Pick-up: 4th September 14.00 at Tallinn Airport –
Drop off 12th September, 12.00 Check-out from the
hostel in Tallinn

£ 530 (including food in Saaremaa, transport,
leisure, accommodation through out the project;
excluding food in Tallinn and tickets for festival)

Estonian Fund for Nature (ELF) was founded in 1991 and works in the field of conservation, sustainable development and nature education. It has been actively organizing voluntary events inc. conservation holidays from 2001. We have held 115 events with 2100 participants since then. Most of our voluntary activities take place in semi-natural habitats, which are quite badly effected by the changes in agriculture



Saaremaa island lies within the East-Atlantic flyway, which is the migration path of waterfowl. This "bird-road" connects Northeastern Europe with arctic regions and each year hundreds of thousands of migratory birds visit Saaremaa in spring and autumn. The barnacle goose, mute swan, whooper swan, eider, shelduck and a great many other bird species have been given protection status. The working site is just one of their landing spots.

Another factor why the conservation work should be done, is the fact that human activity has been important in making the area suitable for migratory birds. As Saaremaa began to rise from the sea around ten thousand years ago and is still rising after the Ice age, the land use has spread always in parallel with the growth of the land from the sea. Thus have formed coastal meadows, providing birds with sufficient food to continue their journey, and avoiding them going to farmers crops. Also the meadow itself with its fauna and flora are under protection.

The work of Laidevahe Nature Reserve is conducted in cooperation with Estonian Native Horses Conservation Society and NGO Laidevahe Loodus as horses can keep the area managed. The meadow is home for many horses all year long and there are also meetings arranged. And there will be not just eye contact but introducing us to the inhabitants of the area and later on are possibilities for riding lessons during couple of hours.

The weather touring the holiday should be worm. It's the beginning of the short northern summer with temperatures around 20 and very long period daylight. The downside is that the seawater is hardly suitable for swimming.

The holiday stands of 4 hours working days (bush cutting and fencing) and afternoon trips around the Saaremaa and will finish with 2 nights in old-town of Tallinn. There is also a nice jazz-festival right at the beginning of the holiday in the area.

We will stay in the new-built guesthouse nearby the Laidevahe Nature Reserve in the village of Siiksaare. The house belongs to a local conservation activist also involved in management of areas and our work at NR. 2 and 3 bed rooms. Homey food prepared through out the holiday.

Local contact:
Siim Kuresoo
+37256469026
siim@elfond.ee

Book now by calling 01302 572244

BOOKING WITH BTCV

BTCV provides a booking service for this holiday but is not directly involved with how it is run. However as leaders in the field of volunteering and conservation holidays, we are keen to promote quality world-wide. Many of the organisations we work with have benefited directly from BTCV training and experience in running conservation projects. To provide you with the reassurance that the organisation is responsible in its approach to the environment, health and safety and making sure you have a great experience, we only promote the holidays of those who either have, or are working towards quality bench-mark accreditation through the international Conservation Volunteers Alliance.

After your booking has been confirmed, all further details about the holiday will come directly from the organisation running it, and queries should be directed to the contact specified.

BOOKING TERMS & CONDITIONS

Please make sure that you have read and understood the booking terms & conditions detailed below before you book. These differ from those of BTCV's own International Conservation Holidays.

HOLIDAY RESERVATION & PAYMENT

Full payment is due at the time of booking and includes a £100 non-returnable deposit.

Please note: Payment for all holidays can be made by cheque in sterling (if you wish to pay in Euros, £1.00 = 1.55 Euros), Visa, Mastercard, Access, Switch, American Express, Delta, JCB, Solo or postal order. Cheques should be made payable to BTCV. All refunds will be made in sterling. Note that your fee and deposit will be fully refunded if your application is unsuccessful.

HOLIDAY TRANSFERS AND CANCELLATIONS

Please only apply for a holiday if you are certain you can attend. If you have no alternative but to transfer or cancel your booking, the following conditions are applicable:

If you wish to transfer your booking to a different holiday with the same organisation, please inform us at least eight weeks before the start date of your original choice. We will transfer your payment minus a £25 administration charge. Failure to do so will result in cancellation charges. If you need to cancel your booking, you must inform us IN WRITING. Other forms of cancellation cannot be accepted. If you cancel over 10 weeks before the start of your holiday, we will refund your holiday payment minus the £100 non-refundable booking deposit. After that, it costs the hosting organisation to replace you and so a percentage of the total cost of the holiday will be retained as indicated below:

70-50 days before	40% retained
49-28 days before	80% retained
27 days or less before	100% retained

If you have to cancel your place at the last minute, please contact the organisation running the holiday directly.

On occasion, the organisation running the holiday is forced to cancel it. In this case you will be informed directly by them initially. BTCV will then contact you to offer you a full refund or alternative holiday. We are not, however, responsible on such occasions for any non-refundable airline tickets, other tickets or payments and penalties that you may incur as a result.

GENERAL CONDITIONS OF APPLICATION

Valid passports and visas are entirely your responsibility. If you have to apply for a visa for your project, allow plenty of time and always ask for a tourist visa. Likewise, when you go through immigration, state that you are on vacation.

It is your responsibility to ensure that your tetanus inoculation is up-to-date and to ensure that you have declared any medical conditions, allergies and past injuries to BTCV. This information will only be passed to the organisation running the programme who will consider any such medical information confidentially.

Non UK residents are welcome to take part in all conservation holidays provided that you:

- are 18 or over
- speak sufficient English to understand instructions and safety information
- apply at least six weeks before the start of your holiday
- are prepared to make your own travel arrangements to the pick-up point specified on this sheet

During the holiday you are required, both morally and legally, to follow safe procedures to ensure that you and others come to no harm. Health and safety procedures are there to protect everyone, as well as to comply with the law. The project leader will explain them fully.

RIGHT OF REFUSAL

BTCV and the hosting organisation reserve the right to refuse applications for its holidays. This is an unusual event, which may arise as a result of an applicant's failure to meet health requirements or in the interests of team compatibility. BTCV will support the right of a hosting

organisation to send volunteers away from the project once it has started should their behaviour compromise the safety, project or general performance of the team.

INSURANCE

You will need to arrange your own insurance unless it is provided by the hosting organisation.

DATA PROTECTION ACT 1998

The personal data we request from you during the booking process includes sensitive personal data, which BTCV needs in order to provide its service to you. Sensitive personal data is defined as information relating to any of the following: racial or ethnic origin, political opinions, religious beliefs, trade union membership, health, sexuality or sex life offences and/or convictions.

By reading and understanding these terms and conditions you have given your consent and are willing for BTCV to process this data which will be used only within BTCV and the organisation running the holiday. If we need to disclose any of this data any further we will seek your consent again.

FEEDBACK

The organisation running the holiday will be keen to receive feedback from you, but BTCV would also like to hear of your experiences to help us guide the nature of our partnerships.